

65" Smart Interactive Display

MW3565-U-CA



Features

- 4K UHD anti-glare display delivers images with extreme detail.
- Ultra-narrow bezel design for perfect aesthetics.
- Dual Wi-Fi modules with both Wi-Fi and hotspot support.
- High-precision infrared touch technology allows up to 32-point touch, realizing smooth co-authoring.
- Multiple utility buttons on the front such as power, volume control, settings, etc.
- A variety of quick tools, such as annotation, screenshot, etc., with a floating window, improving usability and interaction efficiency.
- Wireless screen mirroring from various operating systems such as Android, iOS, and Windows to the display with one touch.
- Fast file transfer allows users to quickly transfer files from a mobile phone to the display via a QR code.
- OTA remote upgrade. The system can be upgraded online without backing up data.
- Split-screen writing. The whiteboard allows independent writing on two split screens at the same time.
- A variety of front interfaces allow users to easily and quickly plug/unplug USB drives and other tools.
- OCR recognition. The whiteboard can automatically recognize text and graphics.

Specifications

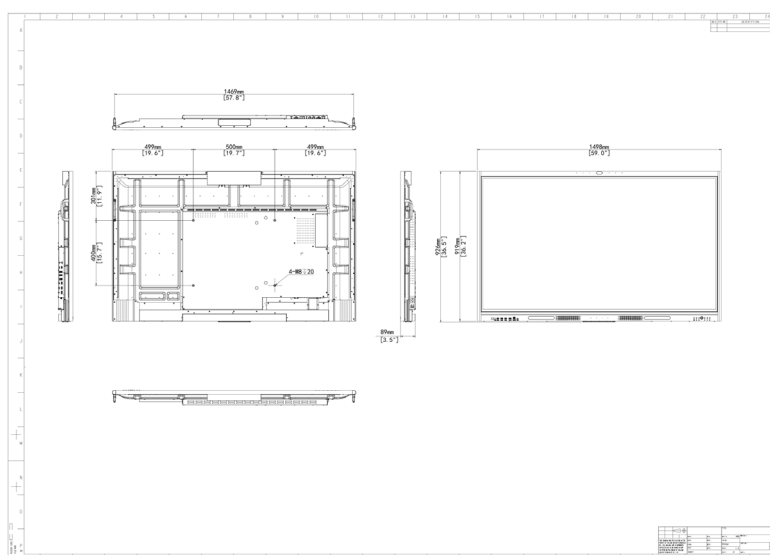
Panel	Description
Backlight	DLED backlight

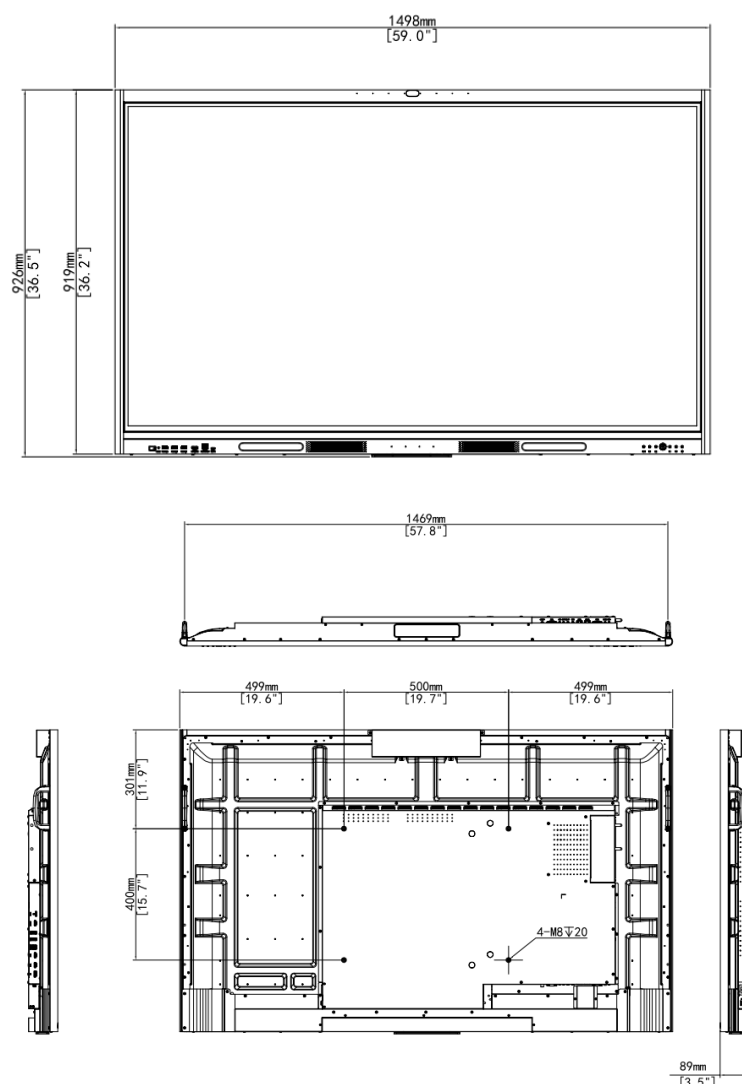
Panel Size	65"
Resolution	3840 x 2160
Brightness (cd/m ²)	350
Contrast Ratio	1200 : 1
Response Time (ms)	8
Viewing Angle (H/V)	178°/178°
Color Support	1.07 billion colors
Refresh rate (Hz)	60
Color gamut	72%
Haze Value	25%
Display Size (mm)	1428.48 x 803.52
Surface Hardness	9H (7 on the Mohs scale)
Pixel Pitch (H x V) (mm)	0.372 x 0.372
Lifespan	50000H
Touch	Description
Touch Control	Contactless IR sensor, supports 32-point touch, 20-point write
Touch Precision (mm)	± 1
Recognizable Object	5 points, 3mm
Glass	4mm tempered glass, level 7 on Mohs hardness scale, anti-glare
Touch Response Time (ms)	≤5
Touchscreen Input	Opaque objects (e.g. fingers, pens)
Touch technology	Infrared touch
System	Description
CPU	Amlogic T982 4 x A55
CPU Frequency	1.9 GHz
RAM/ROM	DDR4: 4GB eMMC: 32GB
System Compatibility	Android 13.0
Interface	Description
Video Input	3 x HDMI IN (4K), 1 x VGA IN, 1 x AV IN, 1 x YPbPr IN, 1 x DP IN
Video Output	1 x AV OUT, 1 x HDMI OUT (4K)
Audio Input	1 x MIC_IN

Audio Output	1 x EARPHONE, 1 x coaxial audio output interface (COAX)
Other Interfaces	1 x RS232, 3 x front USB 3.0, 1 x on-board USB 2.0, 1 x on-board USB 3.0, 2 x TOUCH USB, 1 x Type-C, 1 x TF CARD
Network	1 x LAN OUT, 1 x LAN IN
Audio	Description
Speaker	Left channel : 1 x treble (5 W) + 1 x bass (15 W) Right channel : 1 x treble (5 W) + 1 x bass (15 W)
Wi-Fi	Description
Wi-Fi Configuration	Wi-Fi 5+Wi-Fi 6, supports 5G/2.4G
Wi-Fi Performance	30m ² coverage, 20m transmission distance in open space
Bluetooth	Description
Bluetooth Version	5.2
Bluetooth Performance	10m transmission distance in open space
OSD	Description
Multi-Language	23 (Simplified Chinese, Traditional Chinese, Japanese, German, English, Spanish, French, Italian, Portuguese, Russian, Korean, Vietnamese, Ukrainian, Hungarian, Polish, Thai, Arabic, Kazakh, Bulgarian, Galician, Catalan, Uzbek, Indonesian)
VESA	Description
Wall Mount Hole (mm)	500 x 400
Wall Mount Screw	4-M8 screw hole
Camera	Description
Camera Resolution	Windows: Pixel 13MP for Photos & 13 MP for Video Android: Pixel 13MP for Photos & 1080P for Video
FOV	118°/94°/75°
Microphone	Description
Microphone	8 array microphone
Pickup Distance (m)	8 m
General	Description
Power Supply	AC 100 to 240 V, 50/60 Hz
Overall Power Consumption (W)	188.3 (without OPS)
Standby Power Consumption (W)	<0.5
Product Dimensions (W x H x D) (mm)	1498 x 926 x 89

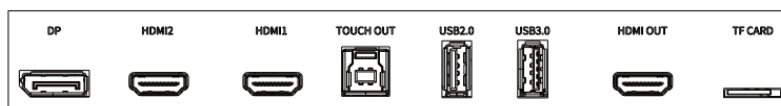
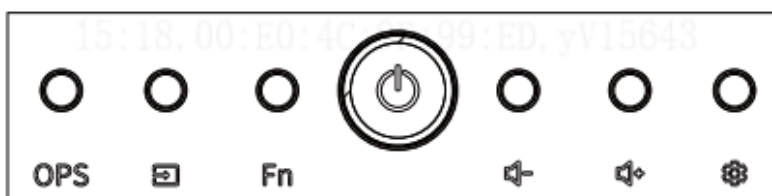
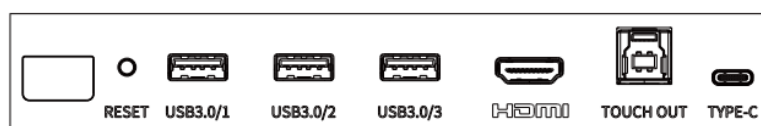
Package Dimensions (W x H x D) (mm)	1615 x 1055 x 205
Operating Temperature	0°C to 50°C
Weight (Kg)	Net weight: 41.4 Gross weight: 45.7
Operating Humidity	10% to 90% RH, non-condensing
Storage Temperature	-20°C to 60°C
Storage Humidity	0% to 95% RH, non-condensing
Accessories Included	1 x power cable, 2 x touch pen, 1 x quick guide, 1 x IR remote controller, 1 x wall mounting bracket
Certification	Description
Certification	Energy Star, CE LVD, CB, ERP, CE EMC, FCC, UKCA LVD, UKCA EMC, RCM

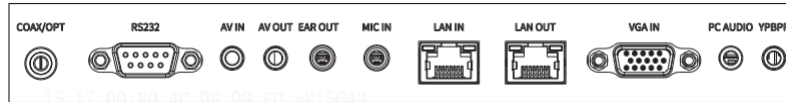
Dimensions





Interface





Ordering Information for Optional Accessories

Model	Remarks
MW3565-U-CA	65" Smart Interactive Display
HB-7199-TP	Wireless Screen Sharing Dongle
HB-4365	65" to 86" smart interactive display wall mount bracket
HB-T-FMC	65 to 86-Inch Smart Interactive Display Mobile Stand
HB-7099-M	Pluggable OPS PC module with i5 processor (Windows 10, not activated)
HB-7099-S	Pluggable OPS PC module with i7 processor (Windows 10, not activated)
LIS-WIN10-V	OS-Windows 10-1-to-1 License-IoT Enterprise Value (with i5 processor OPS module)
LIS-WIN10-H	OS-Windows 10-1-to-1 License-IoT Enterprise High End (with i7 processor OPS module)

Ordering Info

Product Model	Description
MW3565-U-CA	65" Smart Interactive Display

Zhejiang Uniview Technologies Co., Ltd.

No. 369, Xietong Road, Xixing Sub-district, Binjiang District, Hangzhou City, 310051, Zhejiang Province, China

Email: overseasbusiness@uniview.com; globalsupport@uniview.com

<http://www.uniview.com>

©2024 Zhejiang Uniview Technologies Co., Ltd. All rights reserved.

*Product specifications and availability are subject to change without notice.

*Despite our best efforts, technical or typographical errors may exist in this document. Uniview cannot be held responsible for any such errors and reserves the right to change the contents of this document without prior notice.